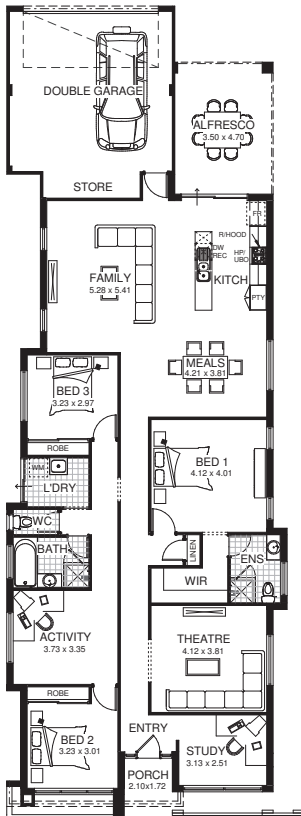


CARDIFF



FLOOR PLAN



ground floor

The Cardiff is a contemporary single story home with rear garage access. With a modern facade this home is well designed to cater to lifestyle without compromising on space or style. The open kitchen overlooks the family and meals areas and opens onto the alfresco, providing a great space for entertaining and relaxing. The theatre room adds to the entertainment options while the front study gives seclusion and privacy. The two bedrooms are supported with a large activity area, bathroom and laundry, while the master bedroom offers a generous space with a walk in robe and stylish ensuite.



suite 5, 108 wanneroo road tuart hill wa 6060
phone: 08 9345 5060
fax: 08 9345 5969
email: info@perthhomebuilders.net.au